

## Electric grills

The Electrolux 900-Line of modular cooking equipment is designed to meet the heavy duty cooking requirements of institutional caterers and the larger restaurants and hotel kitchens. The flexibility of the modular design, with innumerable configurations either free-standing, bridged or cantilever, can be precisely tailored to meet the needs of the caterer. The models detailed on this sheet are 2 electric grills in half and a full module versions ideal for grilling fish and meats.



210244

### EASY TO INSTALL

- All models can be installed on cantilever system.
- Main connections can be via the rear or the base of the unit.
- All models provided with service duct to facilitate installation

### EASY TO CLEAN

- Worktop in 2 mm, 304 AISI stainless steel.
- Front, side, rear and bottom panels in stainless steel with Scotch Brite finish.
- All models have right-angled side edges to allow flush-fitting joints between units, eliminating gaps and possible dirt traps.
- The special design of the control knob system guarantees against water infiltration.

### EASY TO USE

- Units are 93 cm deep to give an unusually large working surface area.
- Incoloy armoured heating elements positioned beneath the cooking grids
- Each half module is provided with one bank of three heating elements (2,5 Kw each)
- Temperature control thermostat for each bank of elements
- Power on' indicator light
- Cast-iron grids with draining channel for fat.

- The grids are suitable on two sides: the first side, sloped with drainage channels, can be dedicated to very fatty meats and the second side, flat, can be used to cook fish, vegetables or hamburgers.
- Large pull-out excess fat container. The use of water in those containers permits the fast lowering of the fats temperature thus guaranteeing a genuine cooking; Moreover the evaporation of the water permits to maintain the foods delicate.

**Elco 900  
Electric grills**

**EASY TO MAINTAIN**

- Access to all components from the front.
- IPX5 water protection.

**EASY ON THE ENVIRONMENT**

- 98% recyclable by weight.
- CFC free packaging.

**Productivity (full module)**

- 336 hamburger fresh 100 gr
- 240 Pilard of veal 80 gr
- 420 Sliced zucchini 1/2 cm
- 168 Pork ribs 160 gr
- 360 Sliced turkey 100 gr
- 108 Sliced salmon 200 gr
- 60 Angler 500 gr 12
- 12 Turbot 1 kg

	<b>ZCGTE1 210243</b>	<b>ZCGTE2 210244</b>
<b>TECHNICAL DATA</b>		
Power supply	Electric	Electric
Configuration	Free Standing	Free Standing
External dimensions - mm		
width	400	800
depth	930	930
height	850	850
height adjustment	50	50
Power - kW		
installed-electric	7.5	15
Net weight - kg.	60	94
Supply voltage	400 V, 3N, 50/60	400 V, 3N, 50/60
<b>ACCESSORIES</b>		
2 PANELS FOR SERVICE DUCT (BACK TO BACK)	206202	206202
2 PANELS FOR SERVICE DUCT (SINGLE INST.)	206181	206181
2 SIDE COVERING PANELS H=700 D=900	216134	216134
2 SIDE KICKING STRIPS	206180	206180
2 SIDE KICKING STRIPS F.CONCRETE INSTAL.	206157	206157
2 SIDE PANELS FOR GRILL / BRATT PAN	206207	206207
FLANGED FEET KIT	206136	206136
FRONT.KICK.STRIP F.CONCRETE INST.1000 MM	206150	206150
FRONT.KICK.STRIP F.CONCRETE INST.1200 MM	206151	206151
FRONT.KICK.STRIP F.CONCRETE INST.1600 MM	206152	206152
FRONT.KICK.STRIP F.CONCRETE INST.200 MM	206146	
FRONT.KICK.STRIP F.CONCRETE INST.400 MM	206147	
FRONT.KICK.STRIP F.CONCRETE INST.800 MM	206148	206148
FRONTAL HANDRAIL 1200 MM	216049	216049
FRONTAL HANDRAIL 1600 MM	216050	216050
FRONTAL HANDRAIL 400 MM	216046	216046
FRONTAL HANDRAIL 800 MM	216047	216047
FRONTAL KICKING STRIP 1000 MM	206177	206177
FRONTAL KICKING STRIP 1200 MM	206178	206178
FRONTAL KICKING STRIP 1600 MM	206179	206179
FRONTAL KICKING STRIP 400 MM	206175	
FRONTAL KICKING STRIP 800 MM	206176	206176
FRONTAL PANEL FOR 400 MM GRILL	206197	
FRONTAL PANEL FOR 800 MM GRILL		206198
JUNCTION SEALING KIT	206086	206086
KIT 4 FEET GRILL/BRATT PAN-CONCRETE INST	206163	206163
LARGE HANDRAIL(PORIONING SHELF)400 MM	216185	216185
LARGE HANDRAIL(PORIONING SHELF)800 MM	216186	216186
PAIR OF COVERING STRIPS FOR END ELEMENTS	216234	216234
S/S GRID W/DRAIN CHANNELS FOR GAS GRILLS	206286	206286
SIDE HANDRAIL-RIGHT/LEFT HAND	216044	216044
STAINLESS STEEL GRID FOR GRILLS	206285	206285
SUPPORT FOR "BRIDGE" SYSTEM 1000 MM	206138	206138
SUPPORT FOR "BRIDGE" SYSTEM 1200 MM	206139	206139
SUPPORT FOR "BRIDGE" SYSTEM 1400 MM	206140	206140
SUPPORT FOR "BRIDGE" SYSTEM 1600 MM	206141	206141
SUPPORT FOR "BRIDGE" SYSTEM 400 MM	206154	206154
SUPPORT FOR "BRIDGE" SYSTEM 800 MM	206137	206137
WATER FILLING TAP-GAS/EL FS GRILLS-400MM	206280	
WATER FILLING TAP-GAS/EL FS GRILLS-800MM		206281

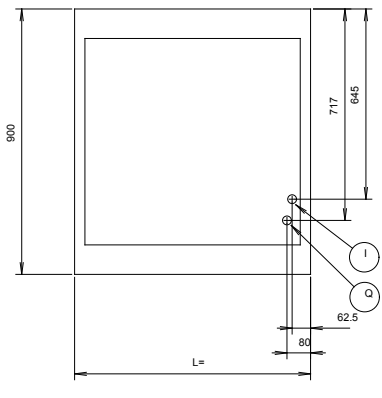
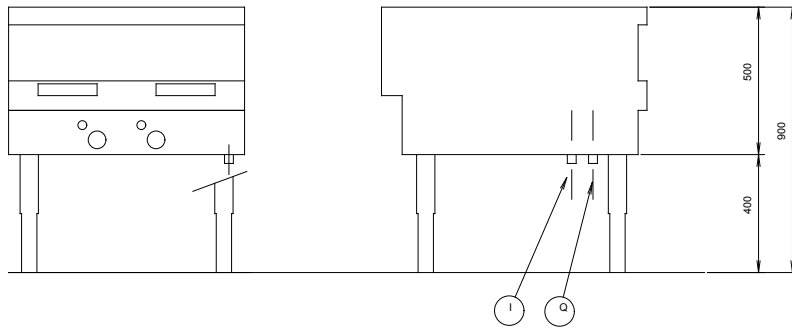
CAH010

2008-04-03

Subject to change without notice

Elco 900  
Electric grills

210243, 210244



L= 800 mm MODEL \*G/E1  
L= 400 mm MODEL \*G/E2

597814900

CAH010

2008-04-03

LEGEND	ZCGTE1 210243	ZCGTE2 210244
	I - Electrical connection	400 V, 3N, 50/60

Subject to change without notice