

## 23 liter gas fryers - high productivity

The Electrolux 900-Line of modular cooking equipment is designed to meet the heavy duty cooking requirements of institutional caterers and the larger restaurants and hotel kitchens. The flexibility of the modular design, with innumerable configurations either free-standing, bridged or cantilever, can be precisely tailored to meet the needs of the caterer. The models detailed on this sheet are 23 liter high productivity gas fryers.



210351



210355

### EASY TO INSTALL

- Main connections can be via the base of the unit.
- Feet in 304 AISI stainless steel 50 mm adjustables in height.

### EASY TO CLEAN

- Worktop in 20/10, 304 AISI stainless steel.
- Front, side, rear and bottom panels in stainless steel with Scotch Brite finish.
- All models have right-angled side edges to allow flush-fitting joints between units, eliminating gaps and possible dirt traps.
- The "V" shaped pressed wells have the burners attached to the outside allowing an increased life of the oil, greater productivity and an easier cleaning.

### EASY TO USE

- Units are 93 cm deep to give an unusually large working surface area.
- Burners in stainless steel with optimized combustion, flame failure device and protected pilot light.
- Working temperature from 110°C to 185°C.
- Additional overheat safety thermostat.
- Model 210355 has integrated oil filtering system and is programmable.
- Model 210351 is programmable.

- All models are supplied for use with natural gas, with LPG conversion jets supplied as standard.

### EASY TO MAINTAIN

- Oil drainage via a tap into a drainage container positioned under the well thus simplifying the consumed oil management and guaranteeing the operator safety.
- IPX5 water protection.

### EASY ON THE ENVIRONMENT

- 98% recyclable by weight.
- CFC free packaging.

### Productivity

- 45 kg/h of frozen French fries.
- 30,6 kg/h of defrosted calamari rings



**Electrolux**

**Elco 900**  
**23 liter gas fryers - high productivity**

	<b>ZFRSG1SE 210351</b>	<b>ZFRSG1SEO 210355</b>
<b>TECHNICAL DATA</b>		
Power supply	Gas	Gas
Installation	FS on concrete base; FS on feet	FS on concrete base; FS on feet
Configuration	Free Standing	Free Standing
External dimensions - mm		
width	400	400
depth	930	930
height	1200	1200
height adjustment	50	50
N° of wells	1	1
Usable well dimensions - mm		
width	340	340
depth	400	400
height	575	575
Thermostatic	●	●
Thermocouple safety valve	●	●
Temperature limiter	●	●
Well capacity - min/max - lt.	21, 23	21, 23
Power - kW		
gas	25	25
auxiliary	0.03	0.03
Net weight - kg.	86	86
Supply voltage	230 V, 1N, 50/60	230 V, 1N, 50/60
Oil filtering		●
<b>INCLUDED ACCESSORIES</b>		
2 HALF SIZE BASKETS FOR HD FRYERS	1	1
OIL FILTER FOR FRYERS	1	1
RIGHT SIDE DOOR FOR OPEN BASE CUPBOARD	1	1
<b>ACCESSORIES</b>		
1 FULL SIZE BASKET FOR HD 900 FRYERS	927226	927226
2 HALF SIZE BASKETS FOR HD FRYERS	927223	927223
2 SIDE COVERING PANELS H=700 D=900	216134	216134
2 SIDE KICKING STRIPS	206180	206180
DEFLECTOR FOR FLOURED PRODUCTS-23L FRYER	960645	960645
EXTENSION FOR OIL DRAINAGE	206209	206209
FLANGED FEET KIT	206136	206136
FRONTAL HANDRAIL 1200 MM	216049	216049
FRONTAL HANDRAIL 1600 MM	216050	216050
FRONTAL HANDRAIL 400 MM	216046	216046
FRONTAL HANDRAIL 800 MM	216047	216047
FRONTAL KICKING STRIP FOR 23 LT FRYER	206203	
HYGIENIC LID FOR 23 LT FRYERS		206201
JUNCTION SEALING KIT	206086	206086
LARGE HANDRAIL(PORTIONING SHELF)400 MM	216185	216185
LARGE HANDRAIL(PORTIONING SHELF)800 MM	216186	216186
LEFT SIDE DOOR FOR OPEN BASE CUPBOARD	216195	216195
OIL FILTER FOR FRYERS	206143	206143
PAIR OF COVERING STRIPS FOR END ELEMENTS	216234	216234
PRESSURE REGULATOR FOR GAS UNITS	927225	927225
RIGHT SIDE DOOR FOR OPEN BASE CUPBOARD	216194	216194
SEDIMENT TRAY FOR 23 LT FRYER	206173	206173
SIDE HANDRAIL-RIGHT/LEFT HAND	216044	216044
SUPPORT FOR "BRIDGE" SYSTEM 1000 MM	206138	206138
SUPPORT FOR "BRIDGE" SYSTEM 1200 MM	206139	206139
SUPPORT FOR "BRIDGE" SYSTEM 1400 MM	206140	206140
SUPPORT FOR "BRIDGE" SYSTEM 1600 MM	206141	206141
SUPPORT FOR "BRIDGE" SYSTEM 400 MM	206154	206154
SUPPORT FOR "BRIDGE" SYSTEM 800 MM	206137	206137
UNCLOGGING ROD F.23LT FRYER DRAIN.PIPE	927227	927227

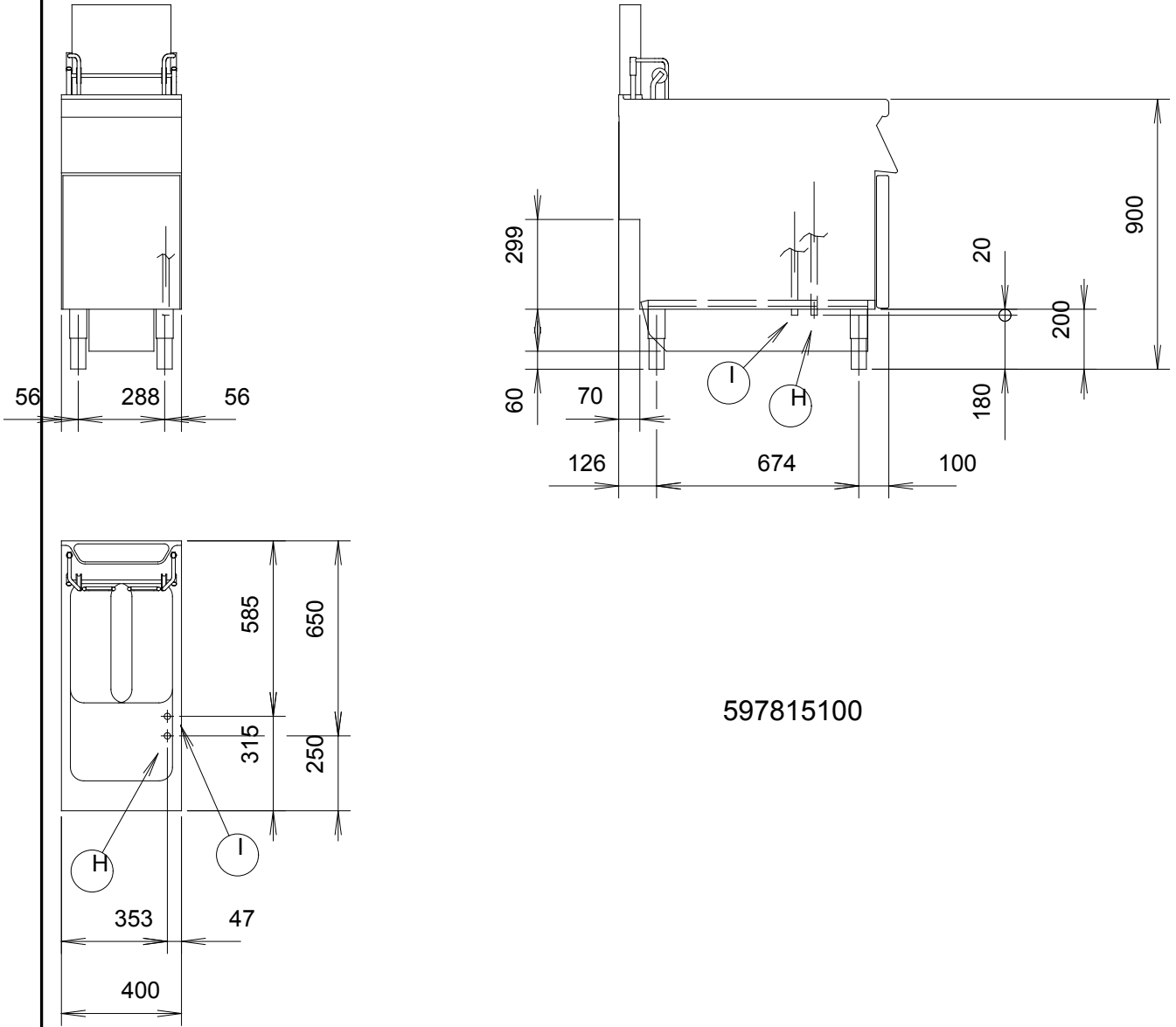
CANC010

2008-04-03

Subject to change without notice

Elco 900  
23 liter gas fryers - high productivity

210351, 210355



597815100

LEGEND	ZFRSG1SE 210351	ZFRSG1SEO 210355
	H - Gas connection	3/4"
I - Electrical connection	230 V, 1N, 50/60	230 V, 1N, 50/60

CANC010

2008-04-03

Subject to change without notice