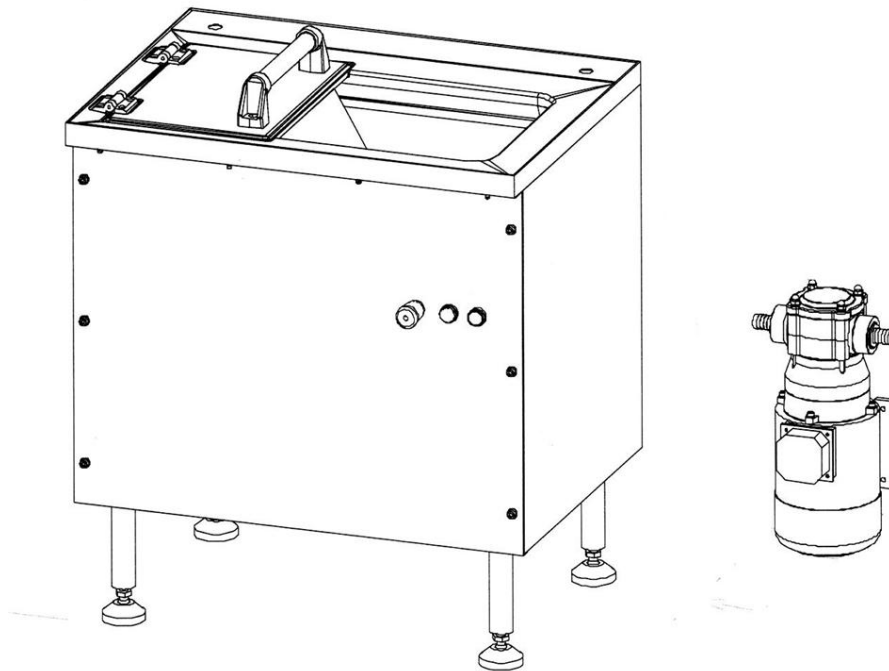


Electrolux Waste Management System

Free standing intake stations

The Electrolux intake stations form part of an innovative new waste management system that provides treated food waste. The system is ideal for kitchens producing more than 80kg of food waste per day and is able to reduce the food waste weight and volume by up to 80%. The system is modular and can be constructed of different components depending on the quantity of food to treat. It is able to produce food waste of a consistent quality that can be re-used for a multitude of environmental purposes. It is also possible to position the intake stations in the dishwashing and preparation areas and the food waste exits in the garbage room, avoiding the need to manually transport dirty waste bins through a hygienic kitchen. The range of freestanding intake stations consist of 6 models.



616011

OPERATING MODES

- The intake stations are used to break-up food (and small quantities of paper and cardboard) so that it can be transported with water either directly to the centrifugal dewatering press or to the 200 litres cylindrical holding tanks.

- 1.5 kW motors

ISFS1510 10kg/batch capacity

ISFS1510P 10kg/batch capacity and pump

ISFS1540P 40kg/continuous capacity and pump.

- 2.2 kW motors

ISFS2210 10kg/batch capacity

ISFS2210P 10kg/batch capacity and pump

ISFS2240P 40kg/continuous capacity and pump.

- Models without pump are used when centrifugal dewatering press or holding cylinders are positioned on floor below, otherwise models with pump is required.

- For installations with food waste requirements of :

- 80 to 150 kg/day: 1,5kW versions are recommended.

- 150 to 250 kg/day: 1,5kW versions plus holding cylinder or 2,2kW versions (without holding cylinder).

- 250 to 350 kg/day: 2,2kW versions plus holding cylinder are recommended.

- Above 350 kg/day: multiple intake stations are required.

- For 40 kg/ continuous models food can be put in continuously via the open trough whereas access to the grinder itself is via a telescopic arm.

- For 10kg/batch models, the lid is completely removable.

- The grinder has two additional protection systems. An overload protection system to prevent the motor from overheating too much food being introduced. An anti-block system if a knife or other article accidentally blocks the grinder. In both cases, the machine stops and a red indicator light turns on.

- The centrifugal pump below the grinding teeth ensures an increased output and no pipe blockage when the slurry leaves the grinding device to the holding cylinder or centrifugal dewatering press.

- The control panel incorporates an on/off button plus emergency cut-out button.



Electrolux

**Electrolux Waste Management System
Free standing intake stations**

- On request, for the dishwashing area, intake stations can be supplied in a trough version or scrapping table version.

CONSTRUCTION

- Grinding ring in corrosion free stainless steel with teeth spaced at 4mm intervals to provide food particles of only 3mm.
- Grinding teeth positioned at various heights in order to avoid blockage with food particles thus obtaining maximum grinding action in the shortest possible time.
- Two stainless steel cutting blades, pivoted to avoid blockage.
- Cutlery magnet as standard on all 40kg continuous capacity models (ISFS1540P and ISFS2240P).
- IP 55 water protection.

INA010

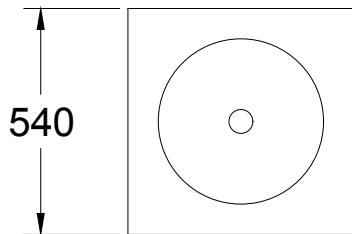
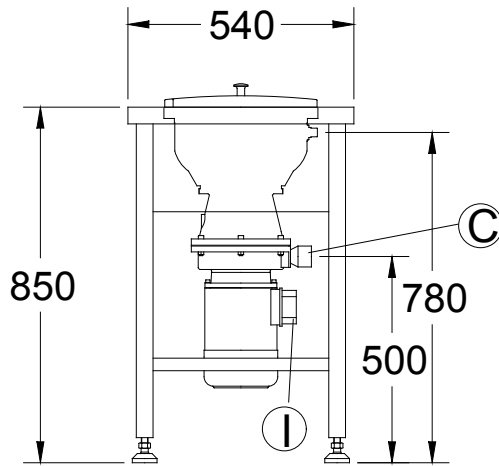
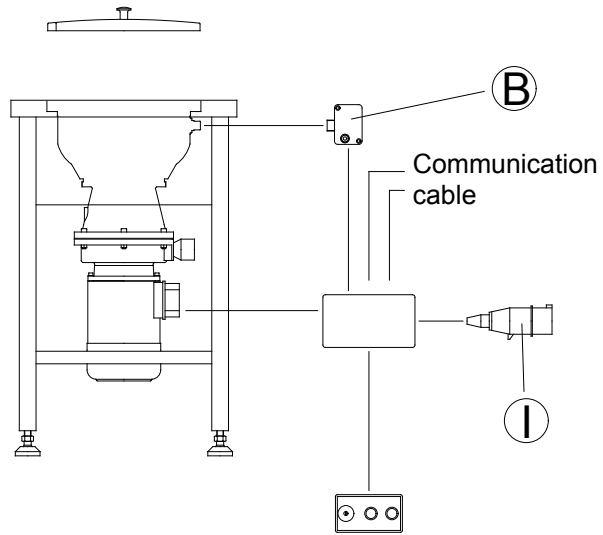
2008-04-04

	ISFS1510 616010	ISFS1510P 616011	ISFS2210 616012	ISFS2210P 616013	ISFS1540P 616008	ISFS2240P 616009
TECHNICAL DATA						
Power supply	Electric	Electric	Electric	Electric	Electric	Electric
Capacity - kg	10	10	10	10	40	40
Performance kg/min	8	8	12	12	12	17
External dimensions - mm						
width	540	540	540	540	800	800
depth	540	540	540	540	600	600
height	850	850	850	850	900	900
Total installed power - kW	1.5	2.6	2.2	3.3	2.6	3.3
Net weight - kg.	31	48	39	46	60	70
Supply voltage	400 V, 3, 50/60	400 V, 3, 50/60	400 V, 3, 50/60	400 V, 3, 50/60	400 V, 3, 50/60	400 V, 3, 50/60

Subject to change without notice

**Electrolux Waste Management System
Free standing intake stations**

616010



INA010

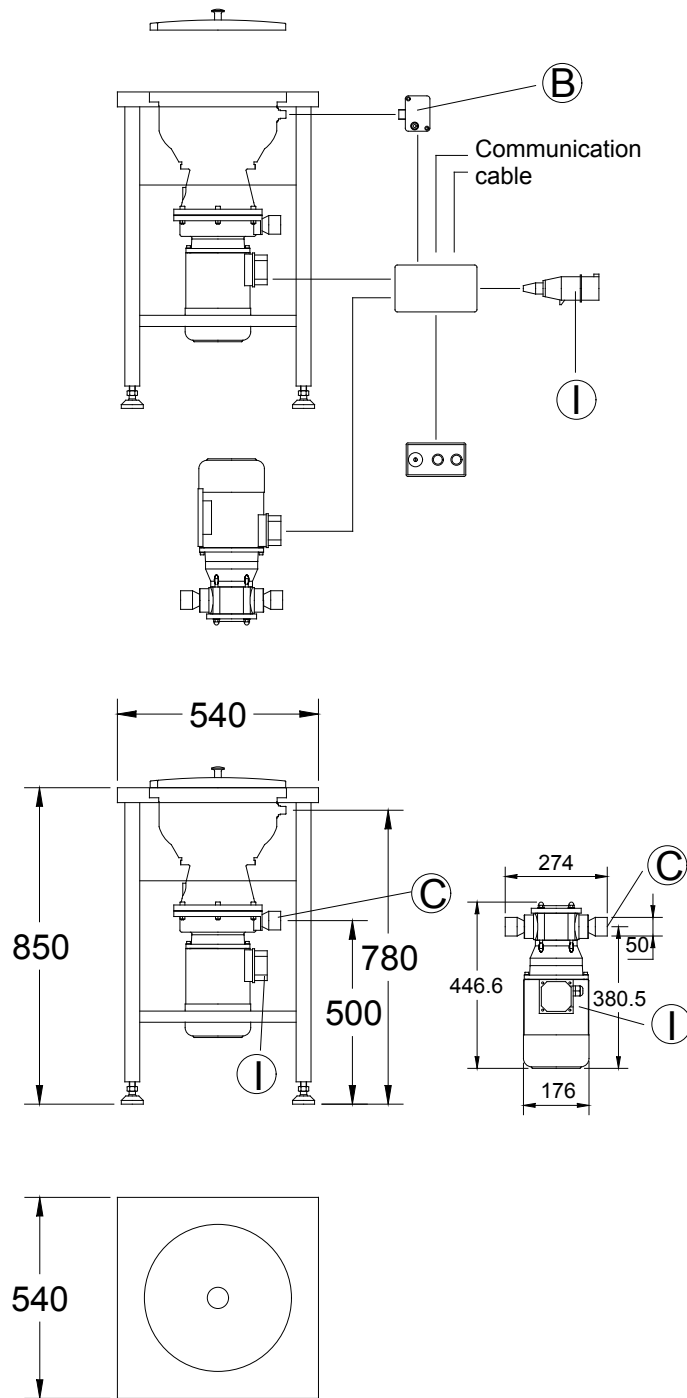
2008-04-04

	ISFS1510 616010
LEGEND	
B - Cold water inlet	3/4"
C - Water drain	50mm
I - Electrical connection	400 V, 3, 50/60

Subject to change without notice

**Electrolux Waste Management System
Free standing intake stations**

616011



LEGEND	ISFS1510P 616011
	3/4"
	50mm
	400 V, 3, 50/60
B - Cold water inlet	
C - Water drain	
I - Electrical connection	

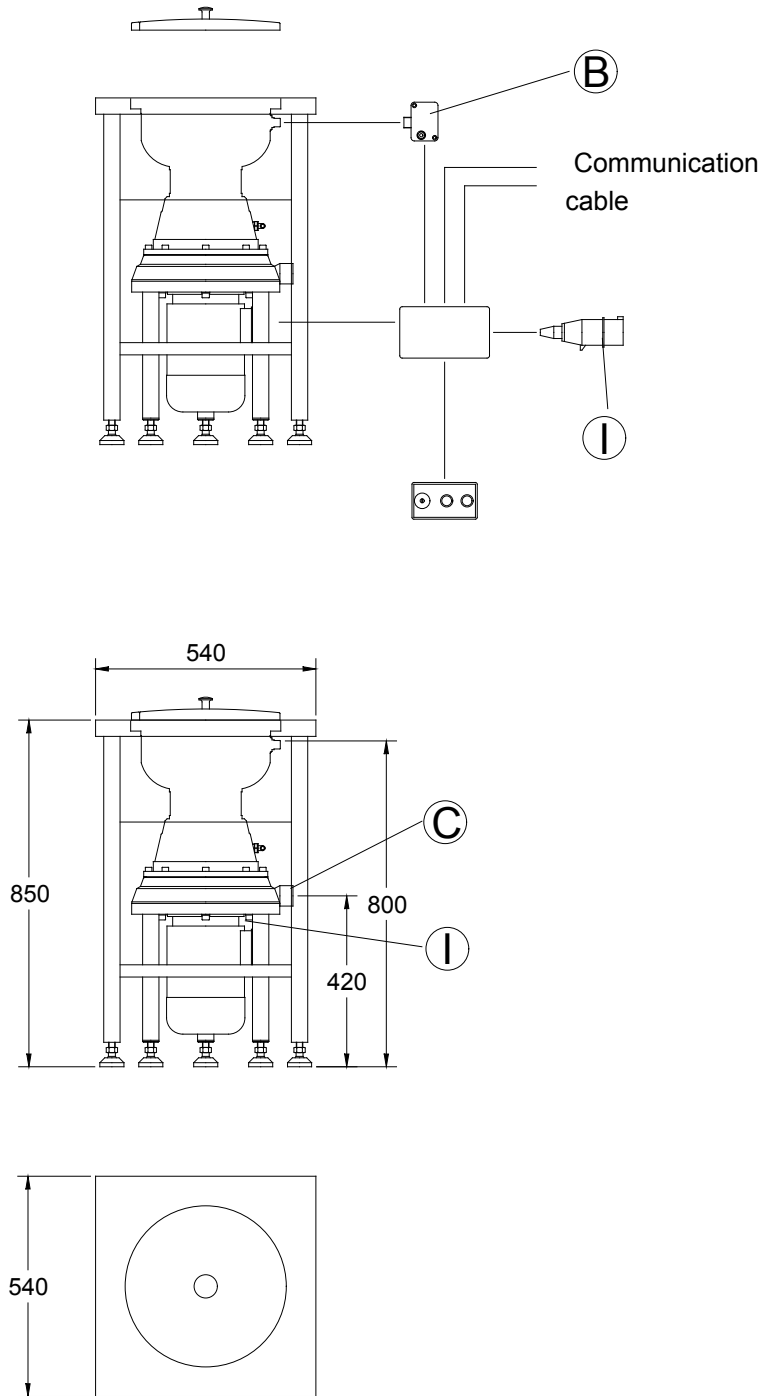
INA010

2008-04-04

Subject to change without notice

**Electrolux Waste Management System
Free standing intake stations**

616012



LEGEND	ISFS2210 616012
	3/4"
	50mm
	400 V, 3, 50/60
B - Cold water inlet	
C - Water drain	
I - Electrical connection	

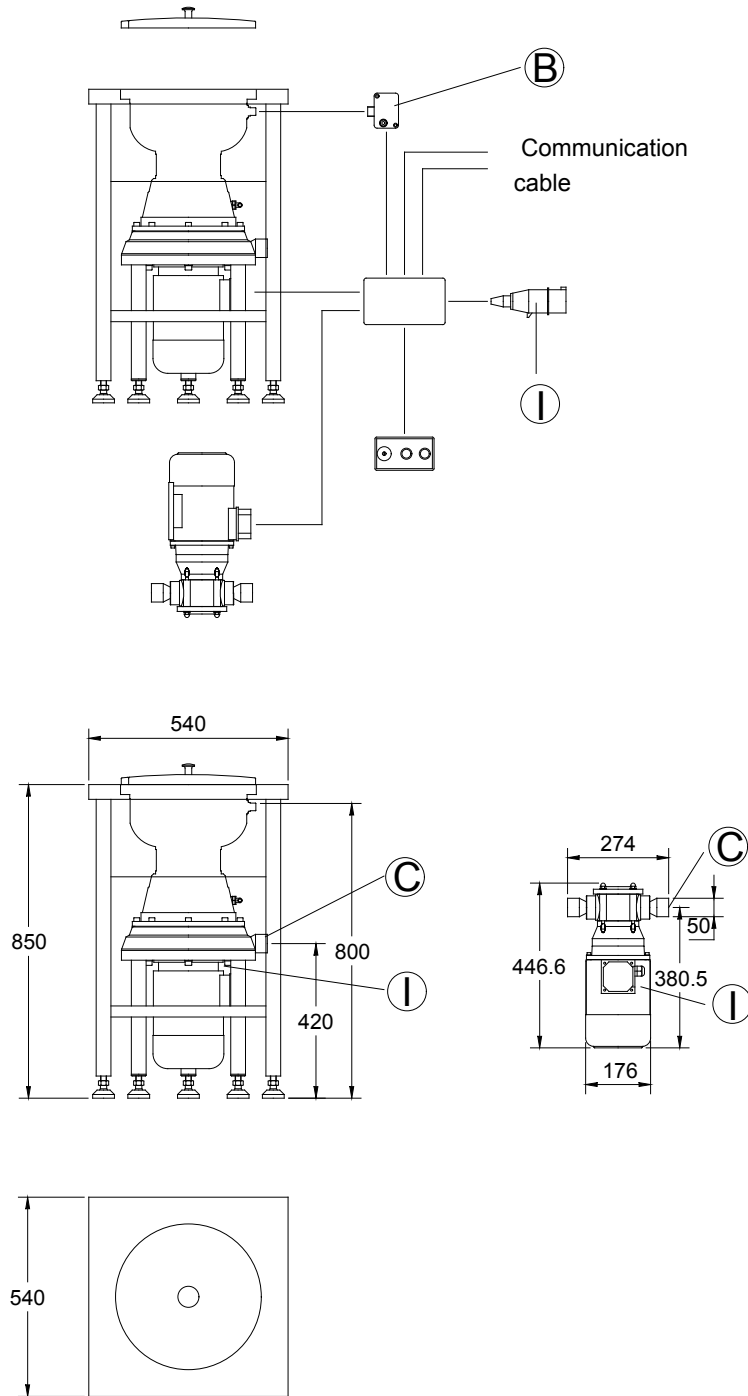
INA010

2008-04-04

Subject to change without notice

**Electrolux Waste Management System
Free standing intake stations**

616013



LEGEND	ISFS2210P 616013
	3/4"
	50mm
	400 V, 3, 50/60
B - Cold water inlet	
C - Water drain	
I - Electrical connection	

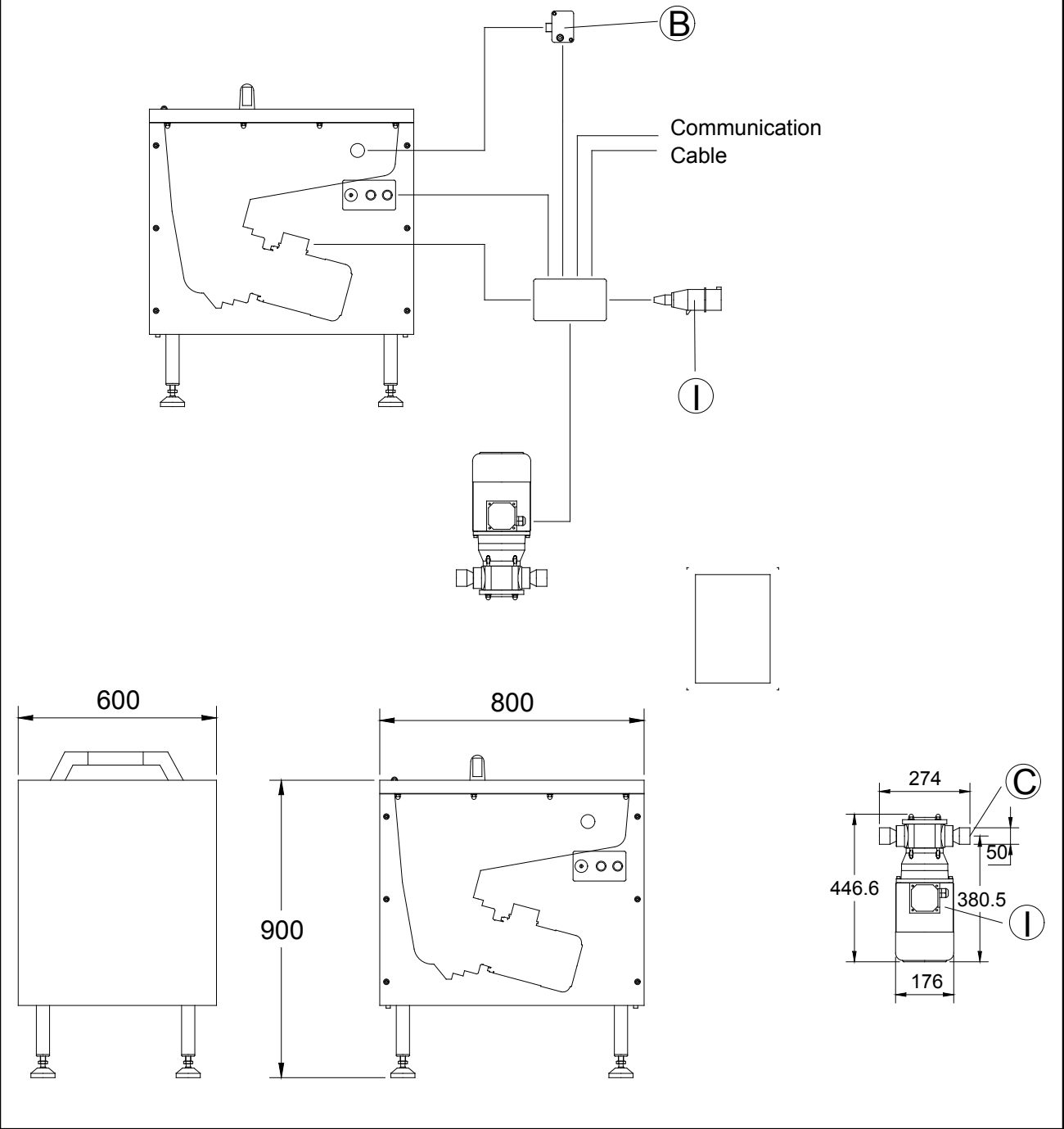
INA010

2008-04-04

Subject to change without notice

**Electrolux Waste Management System
Free standing intake stations**

616008



LEGEND	ISFS1540P 616008
	3/4"
	50mm
	400 V, 3, 50/60
B - Cold water inlet	
C - Water drain	
I - Electrical connection	

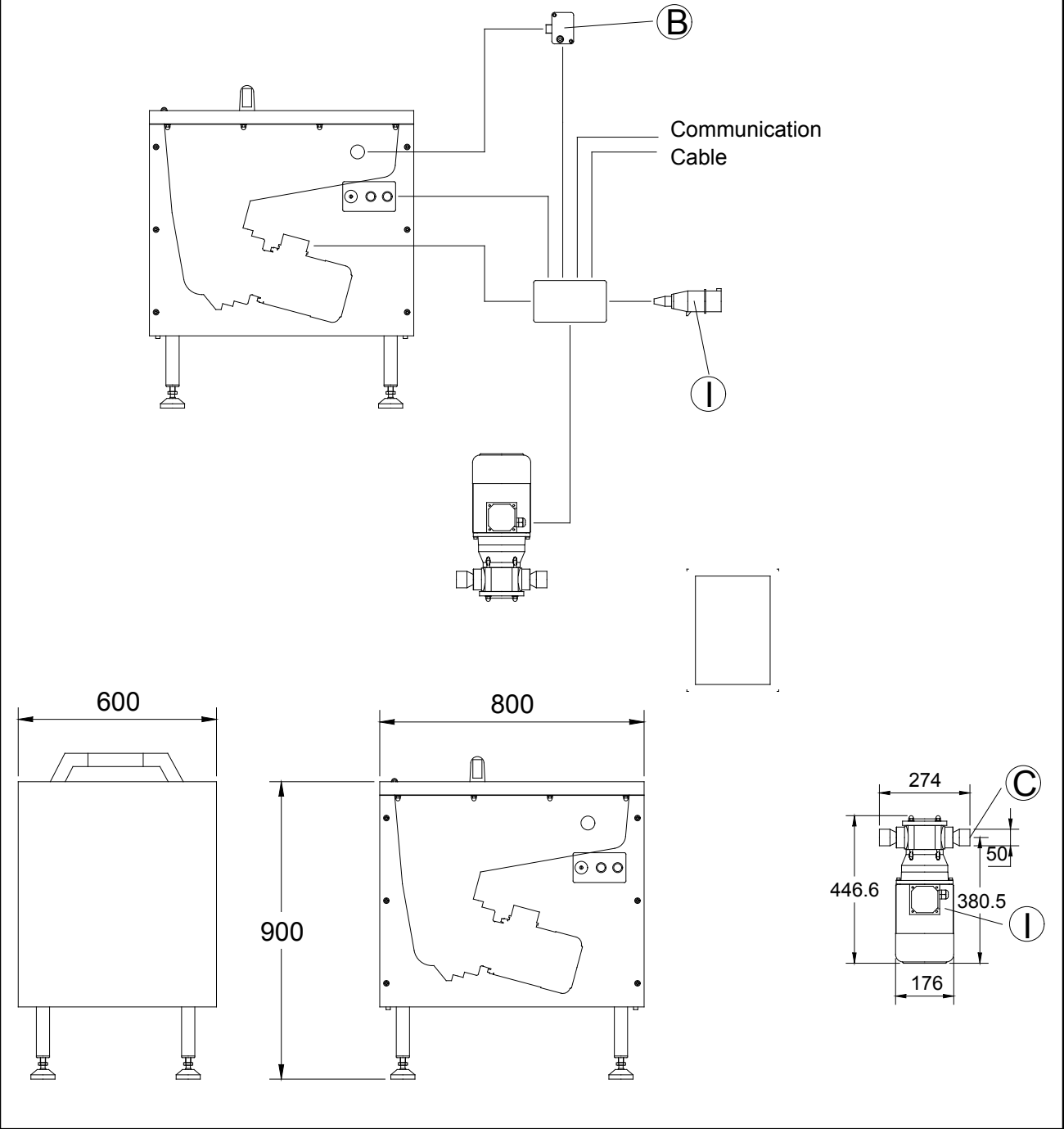
INA010

2008-04-04

Subject to change without notice

**Electrolux Waste Management System
Free standing intake stations**

616009



LEGEND		ISFS2240P 616009
B - Cold water inlet		3/4"
C - Water drain		50mm
I - Electrical connection		400 V, 3, 50/60

INA010

2008-04-04

Subject to change without notice