

Hoods for Convection Steamers

AISI 304 Crosswise

A range of exhaust hoods providing a rational and versatile solution to ventilation problems, specially designed for Convection Steamers. The range consists of 4 models of hoods for 1/1 and 2/1 GN Convection Steamers, with or without ventilation.



Model 640800

EASY TO INSTALL AND MAINTAIN

- Static models: they have to be connected through canalization to a remote extractor.
- Constant efficiency thanks to the never obstructed filtering surface

EASY TO CLEAN

- Easy cleanability in dishwashers thanks to the smooth surfaces

EASY TO USE

- The system guarantees the correct aspirated air flow based on the different working conditions of the oven and a high energy saving too.

- Higher safety as far as the never obstructed filtering surface eliminates any kind of risk of fire.

CONSTRUCTION FEATURES

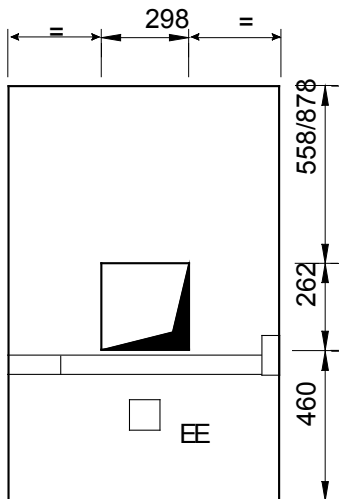
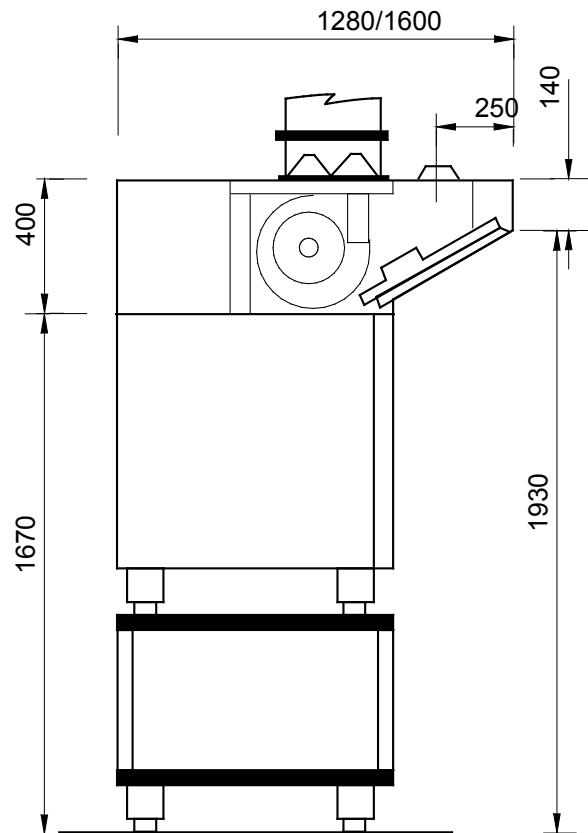
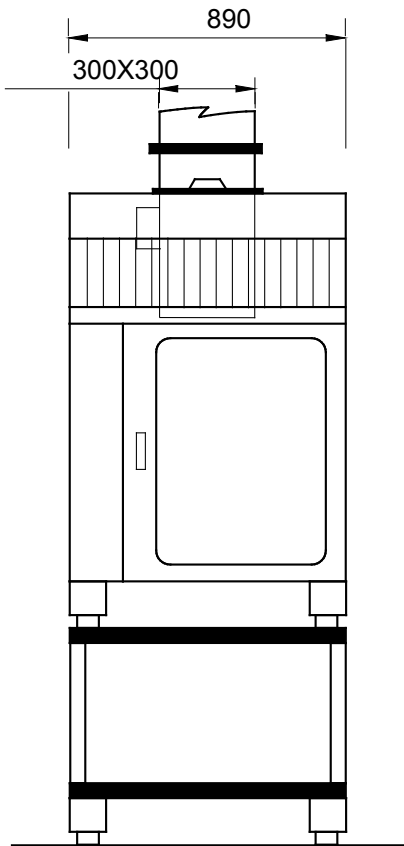
- Built in AISI 304 stainless steel
- Ventilated models: incorporated electric fan automatically driven by an air flow regulation system based on the quantity of emitted steam. The survey and intake zone have inside a humidity detection system driven by an electronic card which detects humidity on the aspirated air. Once the probe detects a humidity reduction the fan lowers its speed until the minimum is reached.

- All models need a direct and independent expulsion of the air to the outside.
- Endowed with “Dedalus” labyrinth filter based on the fat centrifugal filtration. The particular deflector elements disposition forces the intake air to change direction several times. The air fatter particles bump against filter elements and deposit on their internal sides.
- Equipped with exhaust gas outlet chamber.



Electrolux

640800, 640803, 640802, 640801



Hoods for Convection Steamers

AISI 304 Crosswise

MCAA010

2008-04-04

Subject to change without notice

	KF1011 640800	KFV1011 640801	KF1021 640802	KFV1021 640803
LEGEND				
I - Electrical connection		220/240 V, 1N, 50/60		220/240 V, 1N, 50/60
TECHNICAL DATA				
External dimensions - mm				
width	890	890	890	890
depth	1280	1280	1600	1600
height	400	400	400	400
Air Capacity - mc/h	1500	1500	1500	1500
Built-in fan - power W		550		550
Electrical power - kW		0.55		0.55
Net weight - kg.	30	53	33	56
Supply voltage		220/240 V, 1N, 50/60		220/240 V, 1N, 50/60
INCLUDED ACCESSORIES				
304 S/S LABYRINTH FILTER H=500 MM	2	2	2	2