

# Hoods for Hood Type DW

## AISI 304

A range of central hoods guaranteeing a rational and versatile solution to extraction problems over appliances. The models detailed on this sheet are two hoods, in static or ventilated version, specific for hoodtype dishwashers.



### EASY TO INSTALL AND MAINTAIN

- Static models: they have to be connected through canalization to a remote extractor.
- Constant efficiency thanks to the never obstructed filtering surface

### EASY TO CLEAN

- Easy cleanability in dishwashers thanks to the smooth surfaces

### EASY TO USE

- The system guarantees the correct aspirated air flow based on the different working conditions of the oven and a high energy saving too.

- Higher safety as far as the never obstructed filtering surface eliminates any kind of risk of fire.

### CONSTRUCTION FEATURES

- Built in AISI 304 stainless steel
- Ventilated models: incorporated electric fan automatically driven by an air flow regulation system based on the quantity of emitted steam. The survey and intake zone have inside a humidity detection system driven by an electronic card which detects humidity on the aspirated air. Once the probe detects a humidity reduction the fan lowers its speed until the minimum is reached.

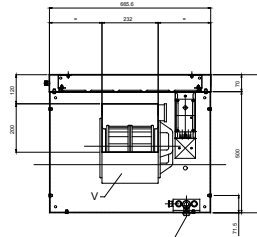
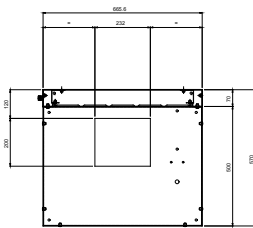
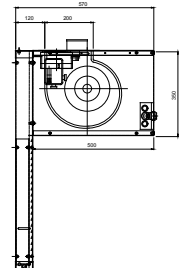
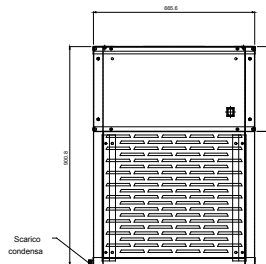
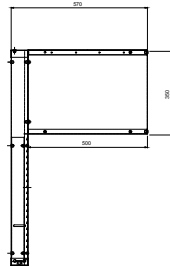
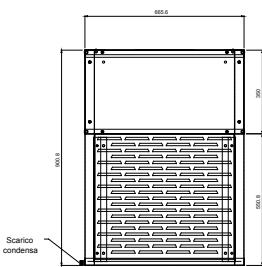
- All models need a direct and independent expulsion of the air to the outside.
- Endowed with “Dedalus” labyrinth filter based on the fat centrifugal filtration. The particular deflector elements disposition forces the intake air to change direction several times. The air fatter particles bump against filter elements and deposit on their internal sides.
- Equipped with exhaust gas outlet chamber.



**Electrolux**

640805

640804



Hoods for Hood Type DW

AISI 304

MCBA010

2008-03-10

Subject to change without notice

LEGEND	KLC 640805	KLCV 640804
	I - Electrical connection	220...240 V, 1N, 50/60
<b>TECHNICAL DATA</b>		
External dimensions - mm		
width	666	666
depth	570	570
height	900	900
Electrical power - kW	0.3	0.3
Net weight - kg.	30	40
Supply voltage	220...240 V, 1N, 50/60	220...240 V, 1N, 50/60